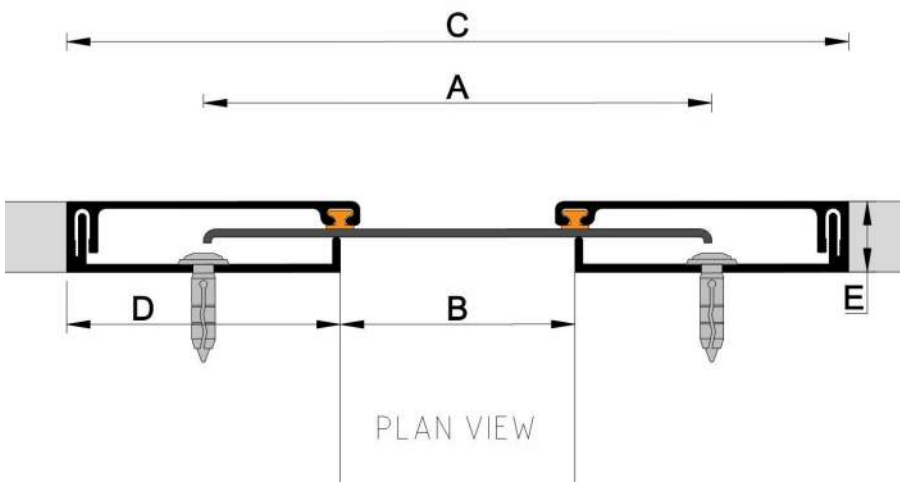
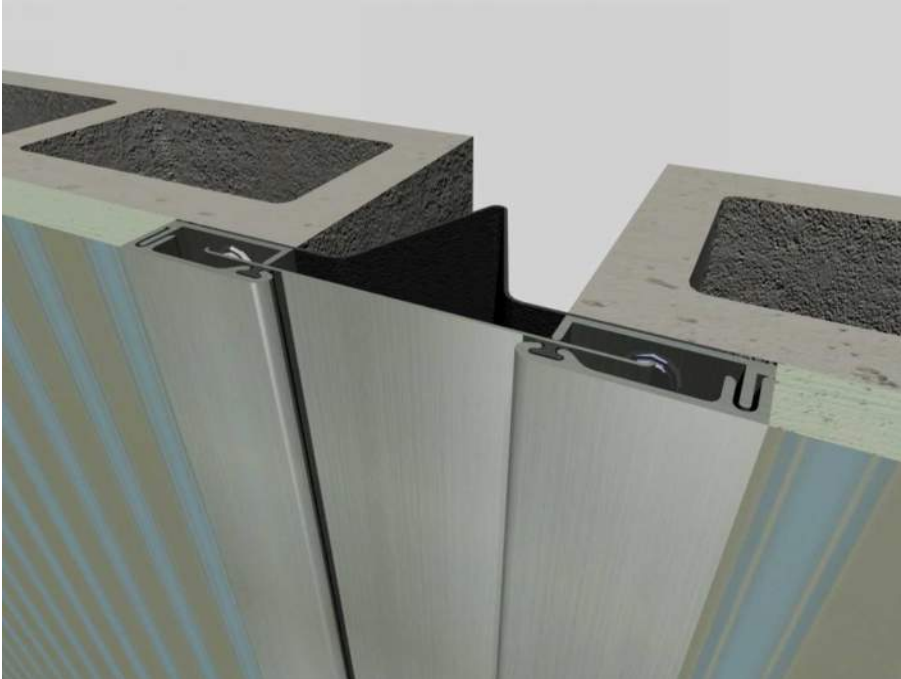


Vertos P

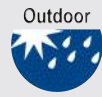
Coverplate EJs for Walls

Vertos P: The VtP is a coverplate-type wall expansion joint system. It is designed to be integrated with finishes such as plasterboard, render, aluminium-panel, and others. VtP can be installed in walls or ceilings internally or externally. Where structural movement joints are designed into corners, obtuse or acute angles can be accommodated. The system has adequate seismic function. It has an optional PVC gland for external applications. VtP can be powder-coated to a colour option, or supplied in a stainless-steel finish.



Vt P

Previous Model No: UP



Performance

- Concealed fixings
- Seismic movement
- Colour range available

Standard Length

3.6m

Standard Finish

Anodised Aluminium

Cover Plates

Clear Anodised



Stainless Steel



Options

Powder Coat



Colour Anodised



Fire Rating

Water Resistant

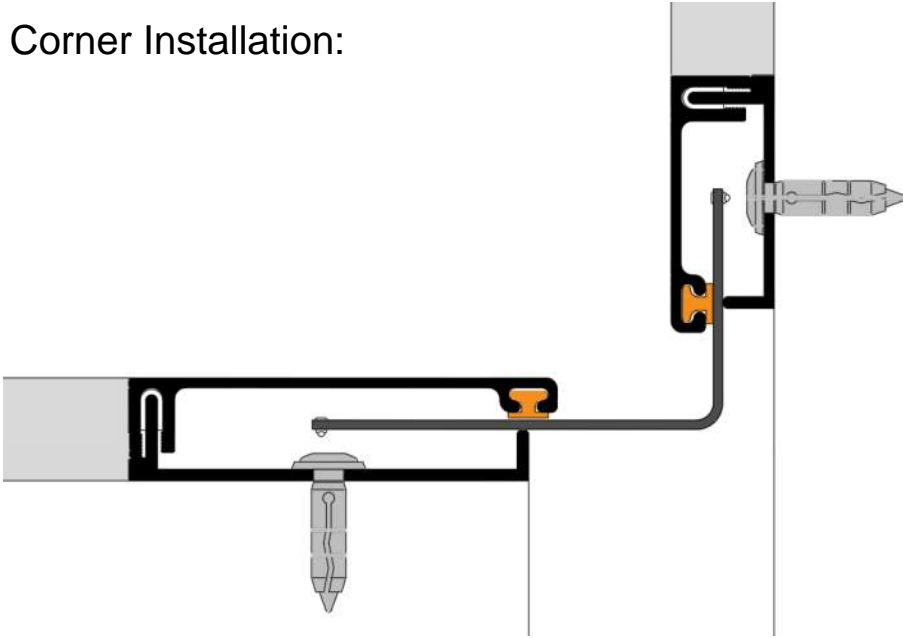


Product	A: Coverplate		B: Gap				C: Exposed Width		
	Width	Thick	Min.	Mid.	Max.	Mvmt.	Min.	Mid.	Max.
Vt130P	130	1.6	10	65	120	110	152	165	262
Vt150P	150	1.6	30	85	140	110	172	205	282
Vt180P	180	1.6	60	115	170	110	202	205	312
Vt220P	220	1.6	100	155	210	110	242	297	352
Vt90PN	90	1.6	32	57	82	50	112	137	162

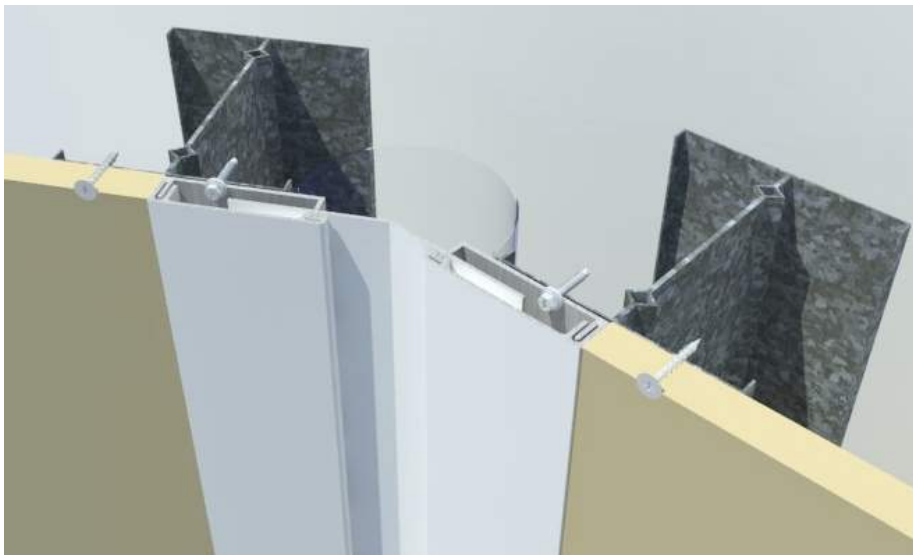
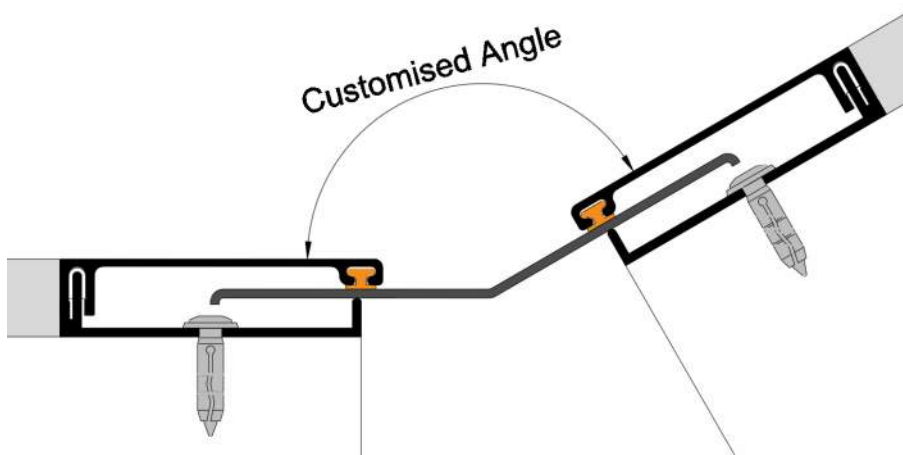
Block Out: 70D x 18E (40D x 18E for Vt PN)

Vertos P Coverplate EJs for Walls

Corner Installation:



Customised Installation:



Vt P

Previous Model No: UP



Performance

- Concealed fixings
- Seismic movement
- Colour range available

Standard Length

3.6m

Standard Finish

Anodised Aluminium

Cover Plates

Clear Anodised



Stainless Steel



Options

Powder Coat



Colour Anodised



Fire Rating



Water Resistant

